

**BORYS GRINCHENKO KYIV UNIVERSITY**

«CERTIFIED»  
Decision of the Academic Council of  
Borys Grinchenko Kyiv University  
«\_\_\_» \_\_\_\_\_ 2023, protocol № \_\_\_

Head of Academic Council

\_\_\_\_\_ Nataliia M. Vinnikova

**EDUCATIONAL AND PROFESSIONAL PROGRAM**

**231.00.02 Social pedagogy**

**The second (master's) level of higher education**

**Field of knowledge: 23 Social work**  
**Specialty: 231 Social work**  
**Qualification: Master of social work**

**(new edition)**

Effective date 01.09.2023  
(order on \_\_\_\_\_.\_\_\_\_.2023, № \_\_\_)

Kyiv – 2023

**CERTIFICATION LIST**  
**of new edition of educational and professional program**  
**231.00.02 Social pedagogy**

Department of Social Pedagogy and Social Work

Protocol on 03.03.2023 № 3

Head of Department \_\_\_\_\_ (Tetiana L. Liakh)

Academic Council of Faculty of Psychology, Social Work and Special Education

Protocol on 15.03.2023 № 2

Head of Academic Council \_\_\_\_\_ (Nataliia A. Klishevych)

Scientific-methodical centre of standardization and education quality

Head \_\_\_\_\_ (Yevhen B. Antypin)

\_\_\_\_.\_\_\_\_.2023

Vice-rector on scientific-methodological and educational work

\_\_\_\_\_ (Oleksii B. Zhyltsov)

\_\_\_\_.\_\_\_\_.2023

## PREFACE

The educational and professional program was developed on the basis of the standard of higher education in the specialty 231 «Social work» for the second (master's) level of higher education, approved by the Ministry of Education and Science of Ukraine (Order № 556 dated on 04/24/2019).

### **Developed by a working group consisting of:**

#### *Head of the working group:*

Tetiana P. Spirina, PhD in Education, Assistant Professor, Assistant Professor of Department of Social Pedagogy and Social Work of Faculty of Psychology, Social Work and Special Education.

#### *Members of the working group:*

Zhanna V. Petrochko, Doctor of Pedagogy, Professor, Professor of Department of Social Pedagogy and Social Work of Faculty of Psychology, Social Work and Special Education;

Olena M. Denysiuk, PhD in Education, Assistant Professor, Assistant Professor of Department of Social Pedagogy and Social Work of Faculty of Psychology, Social Work and Special Education;

Halyna B. Skipalska, executive director of the International Charitable Foundation «Ukrainian Public Health Foundation», director of the HealthRight International (Right to Health), head of the Employers' Council of the Faculty of Psychology, Social Work and Special Education; student of the third (educational and scientific) level of higher education, specialty 231 Social work of the educational and scientific program «Social work».

Olena V. Faidiuk, student of the third (educational and scientific) level of higher education, specialty 231 Social work of the educational and scientific program «Social work», graduate of the educational and professional program «Social pedagogy» of the second (master's) level of higher education (2017);

Iryna S. Nohrina, graduate of the educational and professional program «Social pedagogy» of the second (master's) level of higher education (2022);

Oksana P. Koshil, student of the second (master's) level of higher education in the specialty 231 Social work of the educational and professional program «Social pedagogy» (2022-2023).

### **External reviewers:**

Vira A. Polishchuk, Doctor of Pedagogy, Professor, Head of the Department of Social Pedagogy and Social Work of Volodymyr Hnatiuk Ternopil National Pedagogical University;

Iryna B. Savelchuk, Doctor of Pedagogy, Professor, Professor of the Department of Social Technologies of the National Aviation University.

### **Reviews from representatives of professional associations / employers:**

Valerii A. Tantsiura, Head of the Children's Service of the executive body of the Kyiv City Council (Kyiv City State Administration);

Tetiana P. Basiuk, Executive Director of the All-Ukrainian Charitable Organization «Ukrainian Foundation «Children's Welfare».

The educational program has been implemented since September 1, 2019.

Updated:

Date of revision EP / EP amending	03.03.2023	—	—
Signature		—	—
EP guarantor's name	Tetiana P. Spirina	—	—

## **JUSTIFICATION**

## **JUSTIFICATION**

The changes to the educational and professional program «Social Work», approved by the decision of the Academic Council of the Borys Grinchenko Kyiv University dated on 04/25/2019, protocol № 4 (order № 295 dated on 04/25/2019) are due to factors that emerged during the implementation of educational and professional program (development of work programs of teaching disciplines in accordance with the curriculum and practical training) during the 2019-2020, 2020-2021, 2021-2022 and 2022-2023 academic years.

The need to update the educational and professional program is due to social problems and processes that are caused or exacerbated by the war; the need for specialists capable of socio-pedagogical support of socially vulnerable groups in an inclusive space, creation of interdisciplinary teams. During the implementation of the educational and professional program, in the course of conducted surveys, face-to-face and remote meetings, the project group received feedback from students of higher education, the academic community, employers with wishes to make certain changes and clarifications to the current educational and professional program: to strengthen the educational components dedicated to the formation of research competencies; to provide more opportunities for choosing an individual educational trajectory for students, taking into account their basic education and career plans.

After conducting consultations, working meetings, taking into account the feedback of stakeholders, changes and clarifications to the educational and professional program were agreed, which relate to:

- clarification of the purpose of educational and professional programs;
- clarification and introduction of new professional competencies and program learning outcomes;
- introduction to the mandatory part of educational components aimed at studying modern trends in the development of the specialty and in-depth formation of research and management competencies, the ability to work in the conditions of an interdisciplinary team;
- introduction of alternative selective blocks common to all EPPs;
- making changes to the structural and logical scheme of the EPP.

These changes led to the development of a new edition of the description of the educational and professional program.

## I. Profile of the educational program

### 231.00.02 «Social pedagogy»

<b>1 – General information</b>	
Full name of the higher educational institution and structural division	Borys Grinchenko Kyiv University Faculty of Psychology, Social Work and Special Education
Higher education level	Second (master's)
Higher education degree	Master
Field of knowledge	23 Social work
Specialty	231 Social work
Educational program	231.00.02 Social pedagogy
Qualification	Master of social work
Diploma qualification	Higher education degree – Master, Specialty – 231 Social work Educational program – Social pedagogy
Form of study	Institutional (full-time, part-time)
Language(s) of teaching	Ukrainian
Cycle / level	NQF of Ukraine – level 7, FQ-EHEA – second cycle, EQF-LLL – 7 level
Type of diploma and scope of the program	Master's degree, single, 90 ECTS credits, term of study – 1 year 4 months
Preconditions	Having a bachelor's degree
Accreditation availability	Ministry of Education and Science of Ukraine, Certificate (YK № 11007615) on accreditation of educational and professional program «Social pedagogy» in the specialty 231 Social work for the second (master's) level of higher education The certificate is valid until July 1, 2024.  National Agency for Quality Assurance of Higher Education, Ukraine. The deadline for submitting the program for accreditation is 2024.
Internet address of the permanent placement of the description of the educational program	<a href="https://kubg.edu.ua/">https://kubg.edu.ua/</a>
<b>2 – The purpose of the educational program</b>	
To provide academic training of highly qualified specialists in the field of social work and socio-pedagogical activity, capable of solving complex specialized tasks and practical problems in professional activity, organizing and implementing social-pedagogical activity in an inclusive space, working in conditions of interdisciplinary interaction	
<b>3 – Characteristics of the educational program</b>	
Description of the subject area	<b>Objects of study:</b> social well-being of the population, determinants affecting it; organizational, managerial, expert, control-analytical, project, research activities in the social sphere. <b>Learning objectives:</b> training of specialists capable of solving complex tasks and problems in the social sphere, which involves conducting research and is characterized by uncertainty of conditions and requirements, organizing and implementing socio-pedagogical activities in an inclusive space, working in conditions of interdisciplinary interaction. <b>Theoretical content:</b> notions, concepts, principles of social development of the individual and communities and their use to explain social processes, social protection and assistance to vulnerable

	<p>population groups in the conditions of interdisciplinary interaction.</p> <p><b>Methods, techniques and technologies:</b> methods and technologies of collecting, processing and interpreting research in the social sphere and the sphere of scientific research, organization and provision of social services.</p> <p><b>Instruments and equipment:</b> modern universal and specialized information systems and software products used in the social sphere and in the sphere of scientific research.</p>
Program structure	<p>The ratio of the volumes of mandatory and optional components of the EP:</p> <p><b>Compulsory part (66 credits, 75%):</b> disciplines aimed at the formation of general and special (professional) competences (38 credits), certification (5,5 credits). Share of industrial and pre-diploma practices: 22,5 credits.</p> <p><b>Elective part (24 credits, 25%):</b> disciplines of free choice.</p>
<b>4 – Graduates' suitability for employment and further education</b>	
Suitability for employment	<p>Work by profession in the field of public administration; in institutions providing social services; institutions, organizations of social protection, health care, education, culture, institutions of higher education, etc..</p> <p>According to the National Classifier of Professions ДК 003:2010, specialists who have obtained an education under the educational program 231.00.02 Social pedagogy can hold the following positions</p> <p>2310 teachers of higher education institutions;</p> <p>2321 teachers of professional (vocational and technical) education institutions;</p> <p>2322 teachers of vocational higher education institutions;</p> <p>2340 – teacher of social pedagogy;</p> <p>2340 – psychological-medical-pedagogical consultation consultant;</p> <p>2340 - social pedagogue;</p> <p>2351 – consultant on healthy lifestyle;</p> <p>2352 – childhood protection inspector;</p> <p>2359.2 – organizer of extracurricular and extracurricular educational work with children;</p> <p>2359.2 – teacher-organizer;</p> <p>2412.2 – social responsibility expert;</p> <p>2446.2 – social worker;</p> <p>2446.2 – specialist (on assistance to disadvantaged families, monetary assistance to children, etc.);</p> <p>2446.2 – specialist in social assistance at home;</p> <p>2446.2 – specialist in social work.</p>
Further education	<p>The opportunity to continue studying at the third (educational and scientific) level of higher education. Acquisition of additional qualifications in the post-diploma education system.</p>
<b>5 – Teaching and assessment</b>	
Teaching and training	<p>The educational process is built on the principles of: student-centered, person-oriented learning, competency-based, system-integrative approaches, research-based training.</p> <p>Teaching is conducted in the form of: lectures, seminars, practical classes. Independent work is provided (performance of individual tasks, based on textbooks, manuals, Internet sources); consultations with teachers; e-learning for individual educational components, internships (industrial, pre-diploma internships), writing and defense of a final qualification thesis.</p>

	<p>Teaching methods: problem-based, dialogical, interactive.</p> <p>E-learning, group project work, mentoring support for practitioners, training in the center of practical training: «Center of Social Technologies and Innovations» are being introduced.</p> <p>Teaching is carried out using information technologies on the distance learning platform «Moodle» in the digital university campus, organization of communication on the Google Meet platform, ZOOM, etc..</p> <p>Educational and methodological support of the educational process is carried out through the use of electronic training courses.</p> <p>Stimulation of self-study of students of higher education and organization of group work is practiced with the aim of acquiring teamwork skills and independent search for a solution to a problem, in particular, when solving practical cases.</p> <p>The use of elements of non-formal education during the study of individual modules of disciplines on online educational platforms and during participation in scientific conferences, congresses, webinars, master classes, professional festivals, etc..</p>
Assessment	<p>Cumulative point-rating system, which provides assessment of students for all types of classroom and extracurricular educational activities in the form of intermediate, final (semester) control, as well as certification.</p> <p>Intermediate control (oral survey, essay, written express control/computer testing, etc.), module control, final semester control (credits, exams in oral, written (testing), combined forms, defense of practice reports), certification (defense final qualification work).</p> <p>The evaluation of higher education applicants is carried out in accordance with the unified system of evaluation of academic achievements of students of the Borys Grinchenko Kyiv University.</p>
<b>6 – Program competences</b>	
Integral competence	The ability to organize and conduct socio-pedagogical activities with children and families, to conduct scientific research, to carry out socio-pedagogical activities of an interdisciplinary team in an inclusive educational space
General competences	<p><b>GC 1.</b> Ability to abstract thinking, analysis and synthesis</p> <p><b>GC 2.</b> Ability to develop and manage projects</p> <p><b>GC 3.</b> Ability to evaluate and ensure the quality of the work performed</p> <p><b>GC 4.</b> Ability to communicate in a foreign language</p> <p><b>GC 5.</b> Ability to conduct research at an appropriate level</p> <p><b>GC 6.</b> Ability to show initiative and entrepreneurship</p> <p><b>GC 7.</b> Ability to adapt and act in a new situation</p> <p><b>GC 8.</b> Ability to generate new ideas (creativity)</p> <p><b>GC 9.</b> Skills of interpersonal interaction</p> <p><b>GC 10.</b> Ability to work in a team</p>
Special (professional, subject) competences	<p><b>SC 1.</b> Ability to understand and use modern theories, methodologies and methods of social and other sciences, including methods of mathematical statistics and quantitative sociological methods, in relation to tasks of fundamental and applied research in the field of social work</p> <p><b>SC 2.</b> Ability to identify socially significant problems and factors for achieving social well-being of various population groups</p> <p><b>SC 3.</b> Ability to professionally diagnose, forecast, project and model social situations</p> <p><b>SC 4.</b> Ability to implement methods and technologies of innovative practice and management in the system of social work</p>

	<p><b>SC 5.</b> Ability to communicate with representatives of other professional groups of different levels (experts from other industries/types of economic activity), to establish interaction between state, public and commercial organizations on the basis of social partnership</p> <p><b>SC 6.</b> Ability to evaluate the process and result of professional activity and the quality of social services</p> <p><b>SC 7.</b> Ability to professional reflection</p> <p><b>SC 8.</b> Ability for joint activity and group motivation, facilitation of group decision-making processes</p> <p><b>SC 9.</b> Ability to demonstrate knowledge and own conclusions to specialists and non-specialists</p> <p><b>SC 10.</b> Ability to show initiative and entrepreneurship to solve social problems through the implementation of social innovations</p> <p><b>SC 11.</b> Ability to demonstrate professional identity and act according to social work values</p> <p><b>SC 12.</b> Ability to critically assess the social consequences of policies in the field of human rights, social inclusion and sustainable development of society</p> <p><b>SC 13.</b> Ability to form a positive image of the profession, its status in society</p> <p><b>SC 14.</b> Ability to effectively manage an organization in the field of social work</p> <p><b>SC 15.</b> Ability to develop, test and implement social projects and technologies</p> <p><b>SC 16.</b> Ability to implement the results of scientific research into practical activities</p> <p><b>SCu 17.</b> Ability to organize and conduct socio-pedagogical activities with vulnerable population groups</p> <p><b>SCu 18.</b> Ability to implement socio-pedagogical activities in an inclusive space</p> <p><b>SCu 19.</b> Ability to organize the activities of an interdisciplinary team</p> <p><b>SCu 20.</b> Ability to apply modern theories and models of social work in practical activities</p>
--	---

**7 – The normative content of the training of students of higher education, formulated in terms of learning outcomes**

<p><b>LO 1.</b> Solve complex tasks and problems that require updating and integrating knowledge in conditions of incomplete/insufficient information and conflicting requirements</p> <p><b>LO 2.</b> Critically evaluate the results of scientific research and various sources of knowledge about social work practices, formulate conclusions and recommendations for their implementation</p> <p><b>LO 3.</b> Use foreign sources when performing research and applied tasks, express yourself in a foreign language, both orally and in writing</p> <p><b>LO 4.</b> Show in-depth knowledge and systematic understanding of theoretical concepts, both from the field of social work and from other fields of social and humanitarian sciences.</p> <p><b>LO 5.</b> Collect and carry out quantitative and qualitative analysis of empirical data</p> <p><b>LO 6.</b> Independently and autonomously find information necessary for professional growth, master it, assimilate and produce new knowledge, develop professional skills and qualities</p> <p><b>LO 7.</b> Apply general and specialized software to solve professional problems and carry out scientific research</p> <p><b>LO 8.</b> Make decisions autonomously in difficult and unpredictable situations</p> <p><b>LO 9.</b> Perform reflective practices in the context of social work values, responsibility, including to prevent professional burnout</p> <p><b>LO 10.</b> Analyze the social and individual context of the problems of the person, family, social group, community, formulate the goal and tasks of social work, plan interventions in difficult and</p>
--



unpredictable circumstances in accordance with the values of social work

**LO 11.** Organize the joint activities of specialists from various fields and non-professionals, prepare them to perform social work tasks, initiate team formation and coordinate team work

**LO 12.** Assess the social consequences of policies in the field of human rights, social inclusion and sustainable development of society, develop recommendations for improving the regulatory and legal support of social work

**LO 13.** Demonstrate initiative, independence, originality, generate new ideas for solving tasks of professional activity

**LO 14.** Determine the methodology of applied scientific research and apply methods of quantitative and qualitative analysis of results, including methods of mathematical statistics

**LO 15.** Develop criteria and indicators of the effectiveness of professional activity, apply them in the evaluation of the work performed, offer recommendations for ensuring the quality of social services and management decisions

**LO 16.** Develop social projects at a highly professional level

**LO 17.** Independently build and maintain purposeful, professional relationships with a wide range of people, representatives of various communities and organizations, argue, convince, conduct constructive negotiations, productive conversations, discussions, be tolerant of alternative opinions

**LO 18.** Demonstrate a positive attitude towards one's profession and comply with the ethical principles and standards of social work with one's behavior

**LO 19.** Develop, test and implement social projects and technologies

**LO 20.** Implement the results of scientific research in practical activities

**LOu 21.** Develop and implement preventive and rehabilitation programs

**LOu 22.** Carry out socio-pedagogical activity in an inclusive space

**LOu 23.** Apply modern models, forms and methods of social work when providing social services to different groups of recipients

### **8 – Resource support and program implementation**

Staff	<p>Staff support of the educational and professional program consists of professors and teachers of the Department of Social Pedagogy and Social Work of the Faculty of Psychology, Social Work and Special Education. The teaching staff of the Department of Foreign Languages and Teaching Methods (Faculty of Pedagogical Education) is involved in the teaching of individual disciplines in accordance with their competences and experience.</p> <p>The Department of Social Pedagogy and Social Work of the Faculty of Psychology, Social Work and Special Education is the graduation department.</p> <p>The practically-oriented nature of the educational and professional program involves the wide participation of practitioners who correspond to the direction of the program, which strengthens the synergistic connection between theoretical and practical training.</p> <p>The head of the project group and the teaching staff, which ensures its implementation, meets the requirements specified in the Licensing conditions for conducting educational activities of educational institutions</p>
Material and technical support	<p>Teaching of academic disciplines is carried out in general and special classrooms, for practical classes - in the center of practical training «Center of Social Technologies and Innovations», scientific and methodical office of the Department of Social Pedagogy and Social Work.</p> <p>The University has a sufficient number of specialized computer classes and laboratories, which are equipped with computers with appropriate software, multimedia equipment complexes, visual and methodical materials. All workplaces in computer classes are connected to the</p>

	<p>Internet.</p> <p>The areas of the premises used in the educational process meet accessibility requirements, sanitary standards, and requirements of fire safety rules.</p> <p>All the necessary social and household infrastructure, canteen, buffets are available, the number of places in the dormitories meets the requirements.</p>
Informational and educational and methodological support	<ul style="list-style-type: none"> <li>– The official website of the Borys Grinchenko Kyiv University <a href="https://kubg.edu.ua/">https://kubg.edu.ua/</a>, which contains information about educational programs, educational, scientific and educational activities, structural subdivisions, admission rules, contacts, etc.</li> <li>– digital campus <a href="https://digital.kubg.edu.ua/">https://digital.kubg.edu.ua/</a>, which contains information about: all digital education services, digital science with access to various platforms; digital management of regulatory bases, registers, document flow; image and leadership; digital space with personal offices and corporate mail; infrastructure of the university</li> <li>– e-learning system Moodle</li> <li>– services for organizing online classes: Google Meet (corporate), Google Chat, Google Hangouts, Google Classroom</li> <li>– wireless Internet access points</li> <li>– library, reading rooms</li> <li>– electronic library, repository <a href="http://elibrary.kubg.edu.ua/">http://elibrary.kubg.edu.ua/</a></li> <li>– access to electronic scientific databases Scopus, Web of Science, EBSCO, etc.</li> <li>– study and work curricula</li> <li>– educational process schedule</li> <li>– working programs of academic disciplines</li> <li>– internship programs</li> <li>– methodical recommendations for writing and design of master's theses, etc</li> </ul>
<b>9 – Academic mobility</b>	
National credit mobility	-
International credit mobility	On the basis of concluded agreements, which provide for academic mobility with foreign partner universities and within the framework of the EU Erasmus+ program.
Education of foreign students of higher education	According to the license, training of foreigners and stateless persons is provided. The education process is conducted in the Ukrainian language, so citizens of other countries who speak the Ukrainian language at least at the B1 level can receive education under this educational program.

## II. List of components of the educational and professional program and their logical sequence

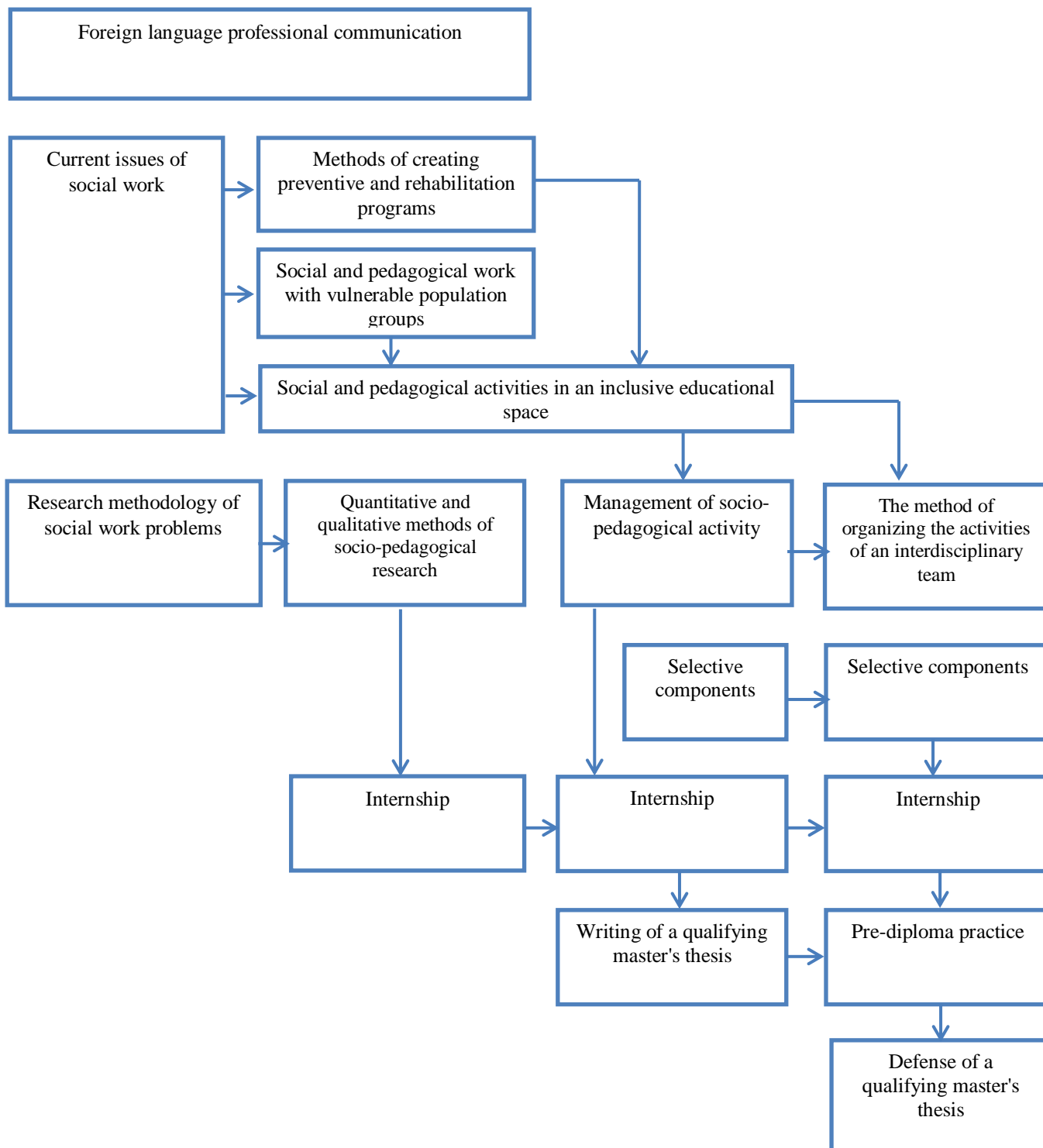
### 2.1. List of EPP components

Component code	Code	Components of the educational program (educational disciplines, course projects (works), practices, qualification work)	Number of credits	Final control form
1	2	3	4	5
<b>Mandatory components</b>				
MC 1	MD.01	Foreign language professional communication	4	Exam
MC 2	MD.02	Current issues of social work	4	Credit
MC 3	MD.03	Research methodology of social work problems	4	Exam
MC 4	MD.04	Quantitative and qualitative methods of socio-pedagogical research	6	Credit
MC 5	MD.05	Social and pedagogical work with vulnerable population groups	4	Exam
MC 6	MD.06	Social and pedagogical activities in an inclusive educational space	4	Exam
MC 7	MD.07	Management of socio-pedagogical activity	4	Exam
MC 8	MD.08	Methods of creating preventive and rehabilitation programs	4	Credit
MC 9	MD.09	The method of organizing the activities of an interdisciplinary team	4	Credit
MC 10	MP.1	Internship	16,5	Credit
MC 11	MP.2	Pre-diploma practice	6	Credit
MC 12	MS.1	Writing and defense of a qualifying master's thesis	5,5	Defense
<b>The total volume of mandatory components:</b>			<b>66</b>	
<b>Selective components (Appendix 1)</b>				
<i>Selective block 1. Social mediation</i>				
SC 1	SD. 1.01	Social conflictology	4	Credit
SC 2	SD. 1.02	Modeling and forecasting of social conflicts	5	Credit
SC 3	SD. 1.03	Theory and practice of social mediation	5	Credit
SC 4	SD. 1.04	Workshop on negotiations	5	Credit
SC 5	SD. 1.05	Lie detection	5	Credit
<b>The total amount of selective components:</b>			<b>24</b>	
<i>Selective block 2. Social project management</i>				
SC 1	SD. 2.01	Management of social projects and programs	5	Credit
SC 2	SD. 2.02	Management decision-making technologies	5	Credit
SC 3	SD. 2.03	Management of social and inclusive environment	4	Credit
SC 4	SD. 2.04	Workshop on community management	5	Credit
SC 5	SD. 2.05	Social marketing	5	Credit
<b>The total amount of selective components:</b>			<b>24</b>	
<i>Selective block 3. Social work in the community</i>				
SC 1	SD. 3.01	Modern models of social work in the	5	Credit

		community		
SC 2	SD. 3.02	Training on development of volunteering and leadership in the community	5	Credit
SC 3	SD. 3.03	Workshop on organizing and conducting an advocacy campaign	5	Credit
SC 4	SD. 3.04	Strategic community development	4	Credit
SC 5	SD. 3.05	Social entrepreneurship	5	Credit
<b>The total amount of selective components:</b>			<b>24</b>	
<i>Selective block 4. Innovations in social work</i>				
SC 1	SD. 4.01	Modern theories of social well-being	5	Credit
SC 2	SD. 4.02	Workshop on creating preventive programs	5	Credit
SC 3	SD. 4.03	Social work in emergency situations	5	Credit
SC 4	SD. 4.04	Gender aspects of social work	4	Credit
SC 5	SD. 4.05	Social protection of the child	5	Credit
<b>The total amount of selective components:</b>			<b>24</b>	
<i>Selective block 5. - Selection from the catalog of courses</i>				
SC 1-5	SD. 5	Selection of academic disciplines from the catalog for the appropriate number of credits	24	Credits
<b>The total amount of selective components:</b>			<b>24</b>	
<b>TOTAL VOLUME OF THE EDUCATIONAL PROGRAM</b>			<b>90</b>	

## .2. Structural and logical scheme

1 course		2 course
1 semester	2 semester	3 семестр



### **III. Form of attestation of applicants of higher education**

Certification of graduates of the educational and professional program 231.00.02 Social pedagogy of the second (master's) level of higher education is carried out in the following form:

✓ *defense of a qualifying master's thesis.*

The certification is carried out openly and publicly.

Qualification work involves the independent solution of a complex task or a complex problem in the field of social work, which is accompanied by research and/or the use of innovative approaches and is characterized by the uncertainty of conditions and requirements.

The qualifying master's thesis is checked for plagiarism. The qualifying work must not contain academic plagiarism, fabrication and/or falsification.

The qualifying master's thesis is published on the University's website (in the repository).

Completion of the educational and professional program in its entirety is completed by issuing the graduate a document of the established model.

#### IV. Matrix of correspondence of program competencies to the components of the educational program

	MC 1	MC 2	MC 3	MC 4	MC 5	MC 6	MC 7	MC 8	MC 9	MC 10	MC 11	MC 12
GC 1			+	+				+				+
GC 2							+				+	+
GC 3				+			+				+	
GC 4	+											
GC 5			+	+							+	+
GC 6					+				+	+		
GC 7						+				+		
GC 8			+					+				+
GC 9						+			+	+		
GC 10						+	+		+	+		
SC 1			+	+	+						+	+
SC 2		+	+		+							+
SC 3			+	+				+				+
SC 4					+		+	+		+	+	
SC 5	+				+		+		+	+	+	
SC 6				+			+				+	+
SC 7		+				+				+		
SC 8							+	+	+	+		
SC 9				+		+			+		+	+
SC 10					+		+				+	
SC 11		+						+		+		
SC 12		+		+	+							+
SC 13		+								+	+	
SC 14							+		+			
SC 15							+			+		+
SC 16			+	+							+	+
SCu 17					+		+			+		
SCu 18						+				+		
SCu 19									+			
SCu 20		+			+			+		+	+	

**V. The matrix of the provision of program learning outcomes by the relevant components of the educational program**

	MC 1	MC 2	MC 3	MC 4	MC 5	MC 6	MC 7	MC 8	MC 9	MC 10	MC 11	MC 12
LO 1			+		+	+		+		+		+
LO 2		+	+									+
LO 3	+		+	+								+
LO 4		+	+									+
LO 5				+								+
LO 6	+			+	+					+		+
LO 7				+							+	
LO 8						+				+	+	
LO 9		+				+		+		+		
LO 10					+			+		+		
LO 11						+	+		+	+		
LO 12						+						+
LO 13			+				+	+		+	+	+
LO 14			+	+								+
LO 15				+			+			+		+
LO 16							+			+		
LO 17	+					+	+		+	+		
LO 18		+			+					+	+	
LO 19							+	+			+	+
LO 20			+		+						+	
LOu 21								+		+		
LOu 22						+	+			+		
LOu 23		+							+	+		



## APPENDIX 1

### SELECTIVE PART OF THE EDUCATIONAL AND PROFESSIONAL PROGRAM

Students exercise the right to free choice of academic disciplines, provided for in clause 15 of part one of Article 62 of the Law of Ukraine «On Higher Education» at Borys Grinchenko Kyiv University, in accordance with the Regulation on the procedure and conditions for students' choice of academic disciplines, approved by the rector's order dated November 25, 2016 № 642.

#### 1. Selective block 1 «Social mediation»

The student's choice of the selective block «**Social mediation**», dedicated to the organization and direct provision of a social service of mediation to individuals and families who are in difficult life circumstances, belong to vulnerable social groups and suffer from long destructive conflicts.

Studying the disciplines of this block is aimed at students acquiring the ability to: analyze the nature of social conflicts and personal conflicts, model and forecast their development and find ways to prevent and overcome them; organize and conduct negotiations between conflicting parties, act as a mediator; organize and conduct the mediation procedure and evaluate its results; identify and overcome factors that prevent conflict resolution.

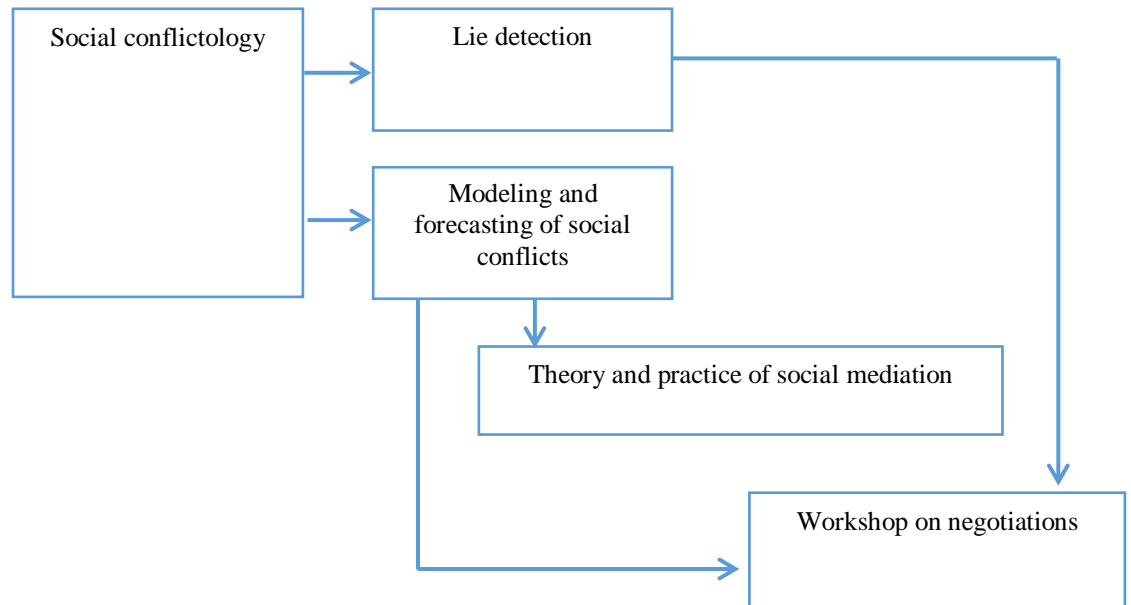
The block is selected during the first month of study. Each semester, students have forms of control on various components of this block.

#### List of selective components of block 1 «Social mediation»

SC 1	SD. 1.01	Social conflictology	4	Credit
SC 2	SD. 1.02	Modeling and forecasting of social conflicts	5	Credit
SC 3	SD. 1.03	Theory and practice of social mediation	5	Credit
SC 4	SD. 1.04	Workshop on negotiations	5	Credit
SC 5	SD. 1.05	Lie detection	5	Credit
<b>The total amount of selective components:</b>			<b>24</b>	

**The structural and logical scheme of the selective components of block 1 «Social mediation» is given below**

	1 course	2 course
1 semester	2 semester	3 semester
<b>Selective block 1 «Social mediation»</b>		



While studying the disciplines of this block, applicants of the second (master's) level of higher education:

- will familiarize themselves with the patterns of conflict development and strategies for overcoming them;
- master the skills of negotiation and mediation;
- get acquainted with the essence, functions, advantages, opportunities and limitations of social mediation as a method of conflict resolution and as a social service;
- will familiarize themselves with the types, forms and models of social mediation, the conditions and possibilities of their application in resolving conflicts in various types of social relations;
- will acquire knowledge about the role, functions and tasks of a mediator, principles and ethical norms regulating his activity;
- master the technique of social mediation and the skills necessary for its effective application.

**Matrix of correspondence of program competencies to selective components of the educational program (selective block 1)**

	SC 1.1	SC 1.2	SC 1.3	SC 1.4	SC 1.5
GC 6				+	
GC 7		+			+
GC 8				+	
GC 9			+	+	+
GC 10		+	+		
SC 1	+				
SC 2	+				

SC 3		+			+
SC 4			+		
SC 5			+	+	
SC 8			+		
SC 9				+	
SC 14				+	
SCu 20		+			

**The matrix of providing learning outcomes with the relevant selective components of the educational program (selective block 1)**

	SC 1.1	SC 1.2	SC 1.3	SC 1.4	SC 1.5
LO 1		+	+		+
LO 4	+				
LO 8				+	
LO 10		+	+		
LO 13				+	
LO 7			+	+	+
LOu 21			+		
LOu 22		+			
LOu 23			+		

**2. Selective block 2 «Social project management»**

The student's choice of the selective block «**Social project management**», dedicated to the management of social projects and programs, creates conditions for deepening professional competences within the chosen educational and professional program.

Studying the disciplines of this block is aimed at students acquiring the ability to: determine the need for social innovations, for organizational and methodical support of social initiatives at the level of the community and organization; develop and organize the implementation of social projects and programs; carry out strategic and operational management of the organization that implements projects and provides social services; organize the activities of teams of social workers and representatives of other professions involved in the implementation of social projects and the provision of social services; initiate proposals regarding regulatory and legal provision of social work and the system of integrated social services in the community; popularize social initiatives and modern models of providing social services in communities; act in accordance with the professional identity and values of social work.

The block is selected during the first month of study. Each semester, students have forms of control on various components of this block.

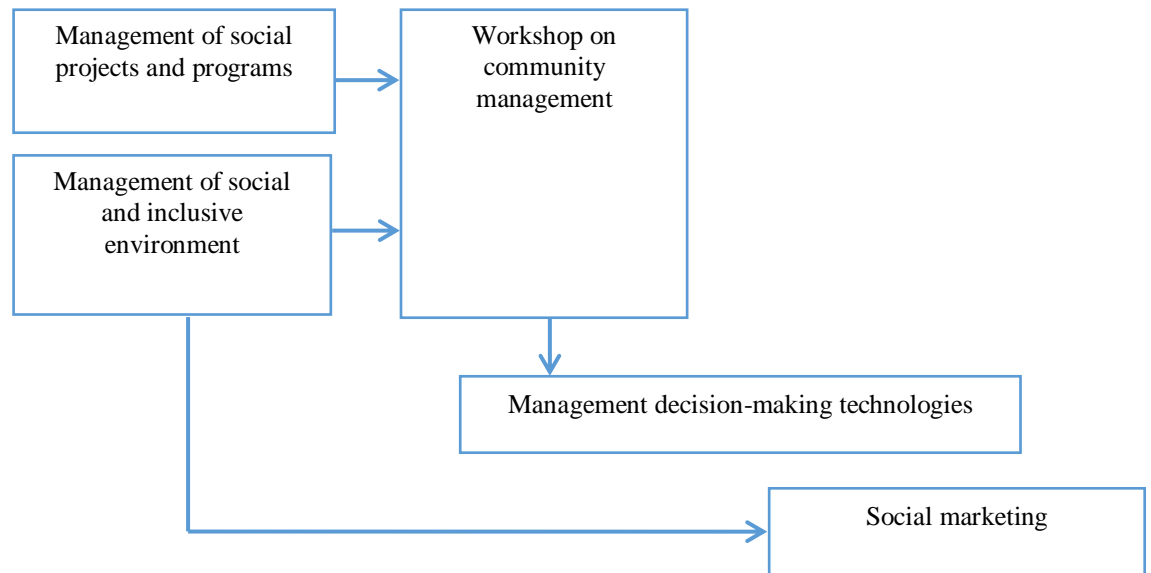
**List of selective components of block 2 «Social project management»**

SC 1	SD. 2.01	Management of social projects and programs	5	Credit
SC 2	SD. 2.02	Management decision-making technologies	5	Credit
SC 3	SD. 2.03	Management of social and inclusive environment	4	Credit
SC 4	SD. 2.04	Workshop on community management	5	Credit

SC 5	SD. 2.05	Social marketing	5	Credit
<b>The total amount of selective components:</b>			<b>24</b>	

**Structural and logical scheme of selective components of block 2 2 «Social project management»**

1 course		2 course
1 semester	2 semester	3 semester
<b>Selective block 2 2 «Social project management»</b>		



While studying the disciplines of this block, applicants of the second (master's) level of higher education:

- get acquainted with the main strategies and models of social project management;
- will acquire the skills necessary for the application of modern methods and forms of project organization, team facilitation, team management, management decision-making;
- will develop leadership, teamwork and project management skills;
- will acquire community management and social marketing skills
- master modern approaches to the implementation of the principles of inclusion and the construction of a favorable social space in the conditions of the community and organization.

**Matrix of correspondence of program competencies to selective components of the educational program (selective block 2)**

	SC 2.1	SC 2.2	SC 2.3	SC 2.4	SC 2.5
GC 1					+
GC 2	+			+	
GC 6	+		+		+
GC 7	+		+		
GC 8					+
GC 9		+			
GC 10				+	
SC 2				+	
SC 4				+	+
SC 5			+	+	+
SC 7					
SC 8			+	+	

SC 9			+		+
SC 10				+	+
SC 11		+	+		
SC 12		+	+		
SC 13		+			
SC 14		+			
SC 15	+				+
SCu 17		+	+	+	

**The matrix of providing learning outcomes with the relevant selective components of the educational program (selective block 2)**

	SC 2.1	SC 2.2	SC 2.3	SC 2.4	SC 2.5
LO 1		+	+	+	
LO 2	+	+			
LO 6	+	+			
LO 8		+		+	
LO 9			+		
LO 10			+	+	+
LO 11	+	+	+		
LO 12			+		
LO 13					+
LO 14	+	+			
LO 15	+	+	+		
LO 16	+	+	+		
LO 17	+	+	+	+	
LO 20					+
LOu21			+		
LOu 22	+				+

### 3. Selective block 3 «Social work in the community»

The student's choice of the selective block «**Social work in the community**» dedicated to modern approaches to social work in the community creates conditions for deepening professional competences within the chosen educational and professional program and takes into account the needs of recipients of educational services aimed at improving the professional competences of practical social work.

Studying the disciplines of this block is aimed at students acquiring the ability to: professionally diagnose, forecast, project and model processes occurring in the community; introduce methods and technologies of innovative practice and management in the system of social work at the community level; communicate with representatives of other professional groups of various levels, to establish interaction between state, public and commercial organizations on the basis of social partnership; facilitate group decision-making processes; show initiative and entrepreneurship to solve social problems through the implementation of social innovations; initiate proposals for the improvement of regulatory and legal provision of social work and the system of integrated social services in the community; work with public opinion.

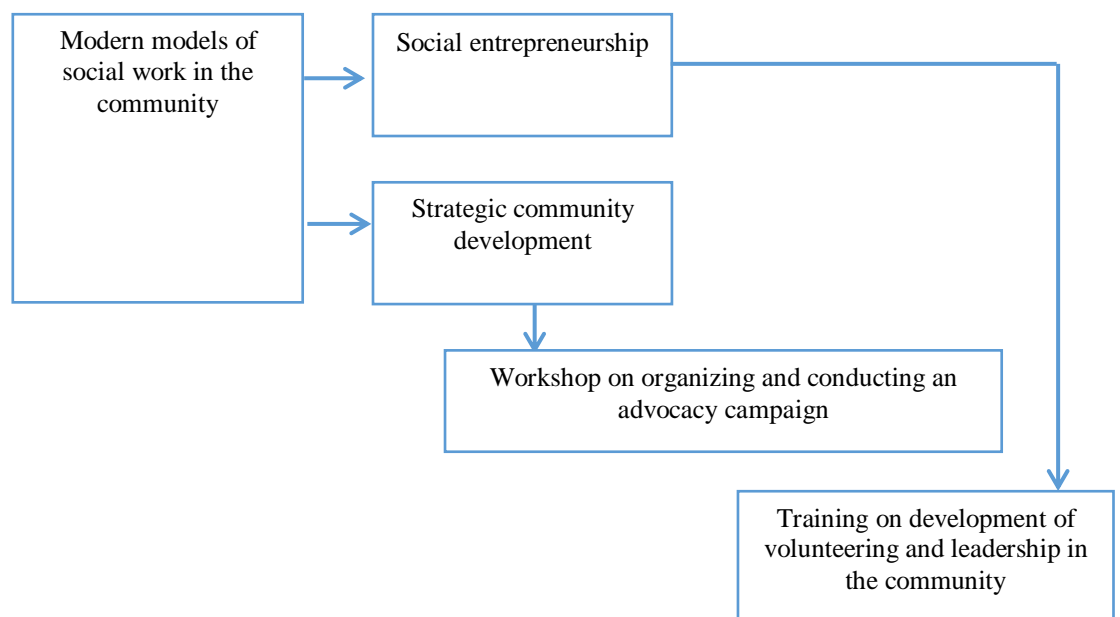
The block is selected during the first month of study. Each semester, students have forms of control on various components of this block.

### List of selective components of block 3 «Social work in the community»

SC 1	SD. 3.01	Modern models of social work in the community	5	Credit
SC 2	SD. 3.02	Training on development of volunteering and leadership in the community	5	Credit
SC 3	SD. 3.03	Workshop on organizing and conducting an advocacy campaign	5	Credit
SC 4	SD. 3.04	Strategic community development	4	Credit
SC 5	SD. 3.05	Social entrepreneurship	5	Credit
<b>The total amount of selective components:</b>			<b>24</b>	

### Structural and logical scheme of selective components of block 3 «Social work in the community»

1 course		2 course
1 semester	2 semester	3 semester
<i>Selective block 3 «Social work in the community»</i>		



While studying the disciplines of this block, applicants of the second (master's) level of higher education:

- get acquainted with the main strategies and models of social work in the community;
- will acquire the skills of researching social processes at the community level and planning the strategic development of the community;
- improve leadership skills;
- master modern approaches in the field of social enterprise;
- will acquire the knowledge and skills necessary to conduct advocacy companies at the level of the territorial community.

### Matrix of correspondence of program competences to selective components of the educational program (selective block 3)

	SC 3.1	SC 3.2	SC 3.3	SC 3.4	SC 3.5
GC 1				+	
GC 2	+				
GC 6					+
GC 8				+	
GC 9		+			
GC 10		+			
SC 2	+			+	
SC 3	+			+	
SC 4		+	+		+
SC 5	+	+	+		
SC 8		+			+
SC 9		+	+		
SC 10	+	+			+
SC 11			+		
SC 12				+	
SC 14		+			+
SC 15	+				
SCu 17	+			+	
SCu 18		+			+
SCu 19	+		+		

**The matrix of providing learning outcomes with the relevant selective components of the educational program (selective block 3)**

	SC 3.1	SC 3.2	SC 3.3	SC 3.4	SC 3.5
LO 1	+			+	
LO 6		+			
LO 8		+			+
LO 9		+			
LO 10	+			+	
LO 11		+			+
LO 12			+	+	
LO 13	+	+			+
LO 15					
LO 17	+	+	+		+
LO 19		+		+	
LOu 21	+			+	
LOu 22	+	+		+	+
LOu 23			+		

**4. Selective block 4 «Innovations in social work»**

The student's choice of the selective block «**Innovations in social work**», dedicated to innovative models of modern social work, creates conditions for improving professional competences in social work in recipients of educational services who have a basic higher education in another specialty.

The study of the disciplines of this block is aimed at the acquisition by students of education of the ability to identify socially significant problems and factors for achieving the social well-being of various population groups; professional diagnosis of social situations and individual cases of recipients of social services; introduction of modern models and methods of

social work. Students will have the opportunity to form the professional identity of a specialist in social work and learn to act according to the values of modern social work.

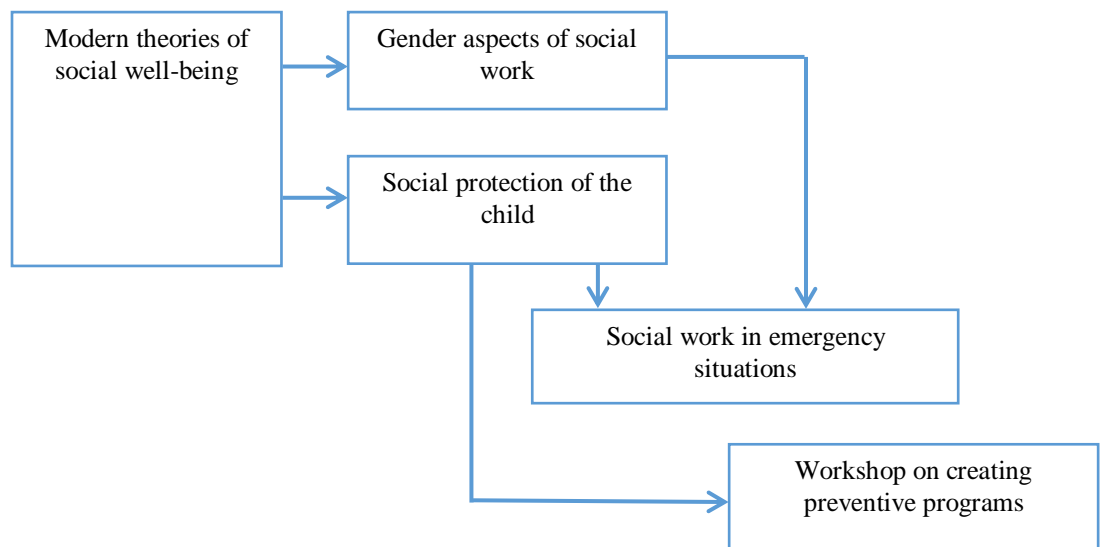
The block is selected during the first month of study. Each semester, students have forms of control on various components of this block.

#### List of selective components of block 4 «Innovations in social work»

SC 1	SD. 4.01	Modern theories of social well-being	5	Credit
SC 2	SD. 4.02	Workshop on creating preventive programs	5	Credit
SC 3	SD. 4.03	Social work in emergency situations	5	Credit
SC 4	SD. 4.04	Gender aspects of social work	4	Credit
SC 5	SD. 4.05	Social protection of the child	5	Credit
<b>The total amount of selective components:</b>			<b>24</b>	

#### Structural and logical scheme of selective components of block 4 «Innovations in social work»

1 course		2 course
1 semester	2 semester	3 semester
<i>Selective block 4 «Innovations in social work»</i>		



While studying the disciplines of this block, applicants of the second (master's) level of higher education:

- get acquainted with modern theories of social well-being and models of social work aimed at its achievement;
- will acquire skills in the development and implementation of preventive programs and social work in emergency situations;
- master the gender aspects of social work and the ability to implement the principles of a gender approach in the provision of social services;
- improve the knowledge and skills necessary for social work with vulnerable social groups and social protection of children and families



**Matrix of correspondence of program competences to selective components of the educational program (selective block 4)**

	SC 4.1	SC 4.2	SC 4.3	SC 4.4	SC 4.5
GC 1	+				
GC 7			+		
GC 8		+			
GC 9			+	+	+
GC 10		+	+		+
SC 1	+				
SC 2	+			+	+
SC 3		+	+	+	+
SC 4		+	+		
SC 5			+		+
SC 8		+			
SC 9					+
SC 10					+
SC 11			+	+	+
SC 12	+			+	+
SC 13					
SC 15		+			
SCu 19	+			+	

**The matrix of providing learning outcomes with the relevant selective components of the educational program (selective block 4)**

	SC 4.1	SC 4.2	SC 4.3	SC 4.4	SC 4.5
LO 1		+	+		+
LO 2	+	+		+	
LO 4	+			+	
LO 6					
LO 8			+		
LO 9			+	+	
LO 10	+	+	+	+	+
LO 11			+		
LO 12	+			+	+
LO 17				+	+
LO 19		+			
LOu 21	+		+	+	+
LOu 22		+	+	+	+
LOu 23	+	+	+		

**5. Selective block 5. - Selection from the catalog of courses**

The choice of disciplines from the Catalog of courses, taking into account one's own needs and interests, enables the applicant to deepen professional knowledge and acquire additional competences, in particular within related specialties of the field of knowledge, and/or to get acquainted with the current level of scientific research in various fields of knowledge and to expand and deepen knowledge in general and special (professional) competences.